

Customer: Amish Health and Wellness

Address: 101 W Main Street  
Centerville, IN 47330 US

Sample ID: 6000mg CBD/ISO 1371568029

Matrix: Tincture

Labnumber: 21F0134-01

Density (g/mL): .9698

## Cannabinoid Profile

Test Conditions: 23°C

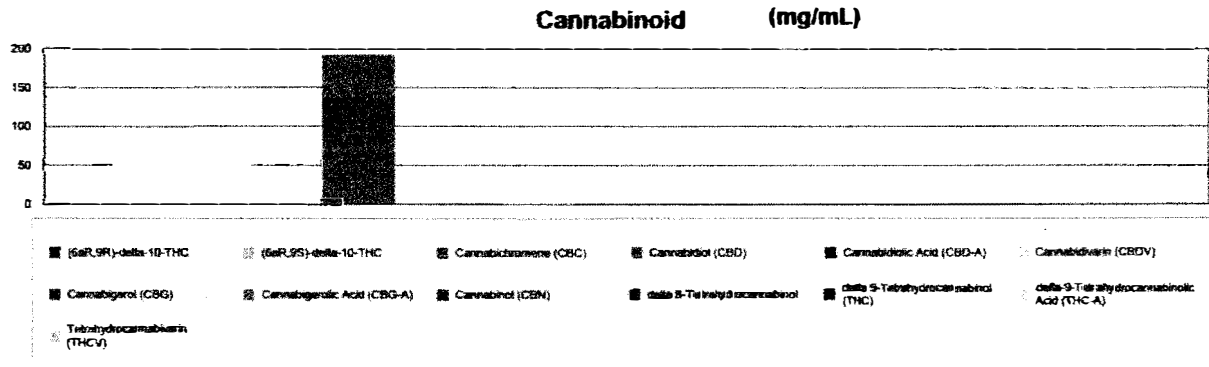
Extraction Technician: SH

Analytical Chemist: SH

Extraction Date(s)	Analysis Date(s)
6/14/2022	6/14/2022

Cannabinoid	LOD (mg/mL)	%	mg/mL
Cannabidivarin (CBDV)		0.09	0.868
Cannabidiolic Acid (CBD-A)	<0.20		
Cannabigeronic Acid (CBG-A)	<0.20		
Cannabigerol (CBG)		0.09	0.877
Cannabidiol (CBD)		19.24	192
Tetrahydrocannabivarin (THCV)	<0.20		
Cannabinol (CBN)	<0.20		
Cannabichromene (CBC)	<0.20		
delta 9-Tetrahydrocannabinol (THC)		0.15	1.54
delta-9-Tetrahydrocannabinolic Acid (THC-A)	<0.20		
delta 8-Tetrahydrocannabinol	<0.20		
(6aR,9S)-delta-10-THC	<0.20		
(6aR,9R)-delta-10-THC	<0.20		
<b>Max Active THC (delta-9-tetrahydrocannabinol)</b>		<b>0.15</b>	<b>1.54</b>
<b>Max Active CBD</b>		<b>19.20</b>	<b>192.00</b>
<b>T.Active Cannabinoids</b>		<b>19.50</b>	<b>195.00</b>
<b>Total Cannabinoids</b>		<b>19.60</b>	<b>196.00</b>

Following USDA guidelines on uncertainty, Altitude Consulting's uncertainty is calculated to be +/- .2% for all cannabinoids using a coverage factor of 2 (95% confidence interval). Measurement uncertainty has not been factored into reported values. Blank results indicate the compound was below the limit of detection.



**Gary Brook - Laboratory Director - 6/15/2022**

Reporting Limits will vary based on sample extraction weight used for the analysis.

The results of this report are based solely on the sample submitted and cannot be reproduced. Decision Rule: Measurement uncertainty is not accounted for in the reported values.

Results are based solely on calculated numbers. Altitude Consulting makes no Statements of conformity. Pesticide, metal, and microbial analyses are subcontracted to ISO 17025 laboratories.