



23E0074-02  
 Morning -  
 CBD  
 CBG  
 Lionsmane  
 - Capsule -

**Customer:** Amish Health and Wellness, LLC  
**Address:** 105 W Main St  
 Centerville, IN 47330  
**Sample ID:** Morning Capsule - Lionsmane &  
**Matrix:** Cannabinoids Capsule  
**Labnumber:** Total mass or volume per unit (g or mL): .3191

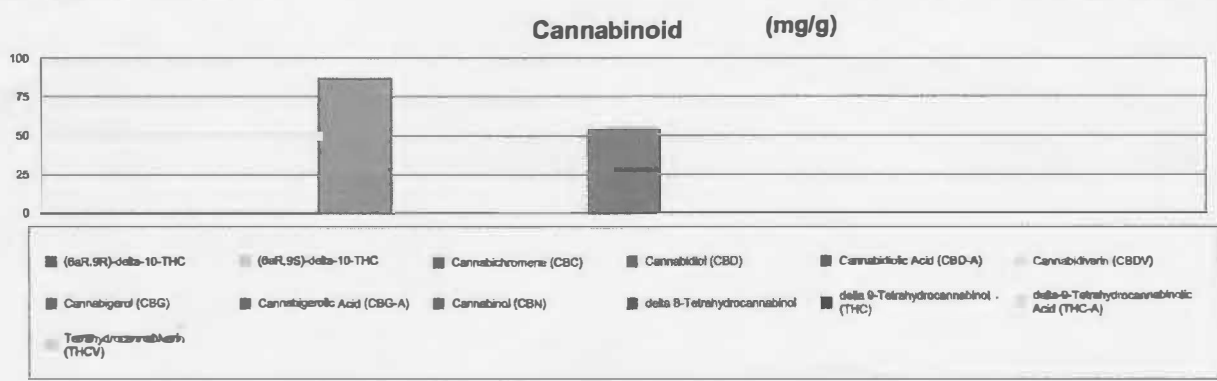
## Cannabinoid Profile

**Test Conditions:** 21°C  
**Extraction Technician:** SH  
**Analytical Chemist:** SH

Extraction Date(s)	Analysis Date(s)
5/15/2023	5/16/2023

Cannabinoids (HPLC)	Results			
	LOD (mg/g)	%	mg/g	mg/Capsule
Cannabidivarin (CBDV)		0.05	0.526	0.168
Cannabidiolic Acid (CBD-A)	<0.060			
Cannabigerolic Acid (CBG-A)	<0.060			
Cannabigerol (CBG)		5.55	55.5	17.7
Cannabidiol (CBD)		8.74	87.4	27.9
Tetrahydrocannabivarin (THCV)	<0.060			
Cannabinol (CBN)		0.02	0.230	0.074
Cannabichromene (CBC)	<0.060			
delta 9-Tetrahydrocannabinol (THC)		0.01	0.115	0.037
delta-9-Tetrahydrocannabinolic Acid (THC-A)	<0.10			
delta 8-Tetrahydrocannabinol		0.01	0.102	0.033
(6aR,9S)-delta-10-THC	<0.10			
(6aR,9R)-delta-10-THC	<0.10			
<b>Cannabinoids Total</b>		<b>%</b>	<b>mg/g</b>	
Max Active THC (delta-9-tetrahydrocannabinol)		0.01	0.12	
Max Active CBD		8.74	87.40	
Total Cannabinoids		14.40	144.00	

Following USDA guidelines on uncertainty, Altitude Consulting's uncertainty is calculated to be +/- 5% for all cannabinoids using a coverage factor of 2 (95% confidence interval). Measurement uncertainty has not been factored into reported values. Blank results indicate the compound was below the limit of detection.



*[Signature]*

**Gary Brook - Laboratory Director - 5/17/2023**

Reporting Limits will vary based on sample extraction weight used for the analysis.  
 The results of this report are based solely on the sample submitted and cannot be reproduced. Decision Rule: Measurement uncertainty is not accounted for in the reported values.  
 Results are based solely on calculated numbers. Altitude Consulting makes no Statements of conformity. Pesticide, metal, and microbial analyses are subcontracted to ISO 17025 laboratories